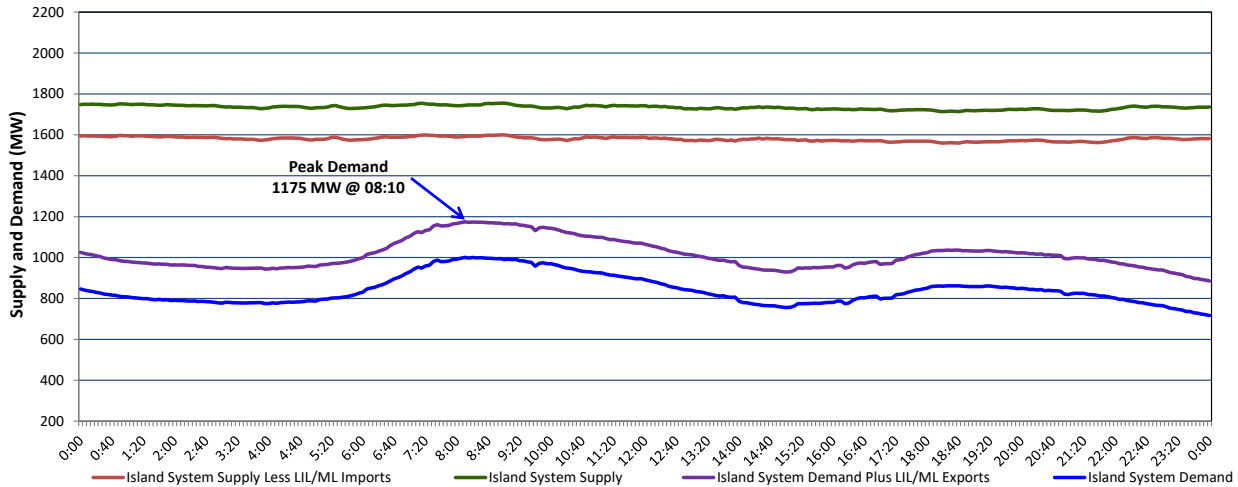


Newfoundland Labrador Hydro (NLH) Supply and Demand Status Report Filed Monday, November 07, 2022

Section 1 Island Interconnected System Supply, Demand & Exports Actual 24 Hour System Performance For Friday, November 04, 2022



Supply Notes For November 04, 2022

1,2

- A As of 1040 hours, August 27, 2022, Holyrood Unit 3 available but not operating (150 MW).
- B As of 1628 hours, October 10, 2022, Bay d'Espoir Unit 4 unavailable due to planned outage (76.5 MW).
- C As of 1423 hours, October 21, 2022, Holyrood Unit 1 available but not operating (170 MW).
- D As of 1630 hours, October 30, 2022, Holyrood Unit 2 available at 150 MW (170 MW).
- E As of 1036 hours, November 03, 2022, Hawkes Bay Diesel Plant available at 2.5 MW (5 MW).

Section 2 Island Interconnected Supply and Demand

Sat, Nov 05, 2022	Island System Outlook ³		Seven-Day Forecast	Temperature (°C)		Island System Daily Peak Demand (MW)	
				Morning	Evening	Forecast	Adjusted ⁷
Available Island System Supply: ⁵	1,825	MW	Saturday, November 5, 2022	9	12	1,055	963
NLH Island Generation: ^{4,8}	1,275	MW	Sunday, November 6, 2022	8	8	1,145	1,052
NLH Island Power Purchases: ⁶	115	MW	Monday, November 7, 2022	13	13	1,110	1,017
Other Island Generation:	220	MW	Tuesday, November 8, 2022	9	4	1,090	997
ML/LIL Imports:	215	MW	Wednesday, November 9, 2022	2	2	1,190	1,096
Current St. John's Temperature & Windchill:	9 °C	N/A	Thursday, November 10, 2022	1	0	1,200	1,106
7-Day Island Peak Demand Forecast:	1,200	MW	Friday, November 11, 2022	7	10	905	815

Supply Notes For November 05, 2022

3

- Notes:
1. Generation outages for running and corrective maintenance are included. These are not unusual for power system operations. They generally do not impact customer supply. The power system operators schedule outages to system equipment whenever possible to coincide with periods when customer demands are low and sufficient supply reserves are available. However, from time to time equipment outages are necessary and reserves may be impacted.
 2. Due to the Island system having no synchronous connections to the larger North American grid, when there is a sudden loss of large generating units there may be a requirement for some customer's load to be interrupted for short periods to bring generation output equal to customer demand. This automatic action of power system protection, referred to as under frequency load shedding (UFLS), is necessary to ensure the integrity and reliability of system equipment. Under frequency events have typically occurred 5 to 8 times per year on the Island Interconnected System and the resultant customer load interruptions are generally less than 30 minutes. With the activation of the Maritime Link frequency controller during the winter of 2018, UFLS events have occurred less frequently.
 3. As of 0800 Hours.
 4. Gross output including station service at Holyrood (24.5 MW) and improved NLH hydraulic output due to water levels (35 MW).
 5. Gross output from all Island sources (including Note 4).
 6. NLH Island Power Purchases include: CBPP Co-Gen, Nalcor Exploits, Rattle Brook, Star Lake, Wind Generation and capacity assistance (when applicable).
 7. Adjusted for curtailable load, market activities and the impact of voltage reduction when applicable.
 8. Due to limitations inherent in the design of combustion turbines, the output of combustion turbines may be reduced in the event that ambient temperatures exceed the threshold.

Section 3 Island Peak Demand Information Previous Day Actual Peak and Current Day Forecast Peak

Fri, Nov 04, 2022	Actual Island Peak Demand ⁹	8:10	1,175 MW
Sat, Nov 05, 2022	Forecast Island Peak Demand		1,055 MW

- Notes: 9. Island Demand / LIL / ML Exports (where applicable) is supplied by NLH generation and purchases, plus generation owned and operated by Newfoundland Power and Corner Brook Pulp & Paper (Deer Lake Power, DLP).